

# Safeguarding Children & Families

## Monthly Performance Report

### As at Month End: January 2016

*Please note: Data reports are not dynamic. Although care is taken to ensure data is as accurate as possible every month, delays in data input can result in changes in figures when reports are re-run retrospectively. To combat this at least two individual months data is rerun for each indicator. Therefore there may be data discrepancies present when comparing this report to that of the previous month.*

#### Document Details

**Status:** FINAL

**Date Created:** 18/2/2016

**Created by:** Deborah Johnson, Performance Assurance Manager - Social Care

**Contact:** Ext. 22666 / [deborah.johnson@rotherham.gov.uk](mailto:deborah.johnson@rotherham.gov.uk)

# Performance Summary

As at Month End: January 2016

(\*DOT\* - Direction of travel represents the direction of 'performance' in reference to the polarity of 'good' performance for that measure.)

	NO.	INDICATOR	GOOD PERF IS	DATA NOTE (Monthly)	LAST THREE MONTHS			Year to Date 15/16		DOT (Month on Month)	RAG (in month unless stated)	Target and Tolerances			YR ON YR TREND		LATEST BENCHMARKING - 2014/15			
					Nov-15	Dec-15	Jan-16	YTD	DATA NOTE			Red	Amber	Target Green	2013/14	2014/15	STAT NEIGH AVE	BEST STAT NEIGH	NAT AVE	NAT TOP QTILE THRESHOLD
LOOKED AFTER CHILDREN	7.1	Number of Looked After Children	Info	Count	411	421	417			↓				n/a		407				
	7.2	Rate of Looked After Children per 10,000 population aged under 18	Info	Rate per 10,000	72.9	74.6	73.9			↓	More than +/-5	More than +/-5	+/-5	upto +/-2 of 73.5	70	70	73.4	49.0	60.0	-
	7.3	Admissions of Looked After Children	Info	Count	25	20	10	172	Financial Year	↓				n/a	147	175				
	7.4	Number of children who have ceased to be Looked After Children	High	Count	16	11	15	166	Financial Year	↑				n/a	136	160				
	7.5	Percentage of LAC who have ceased to be looked after due to permanence (Special Guardianship Order, Residence Order, Adoption)	High	Percentage	43.8%	36.4%	53.3%	36.7%	Financial Year	↑	YTD	<33%	33%>	35%	55 40.44%	60 37.50%				
	7.6	LAC cases reviewed within timescales	High	Percentage	88.57%	94.9%	91.4%	82.9%	Financial Year	↓		<90%	90%<	95%	98.6%	352/371 94.9%				
	7.7	Percentage of children adopted	High	Percentage	12.5%	36%	13.3%	20%	Financial Year	↓	YTD	<20%	20%<	22.7%	26.5%	26.3%	25.1%	35.0%	17.0%	37.0%
	7.8	Health of Looked After Children - up to date Health Assessments	High	Percentage	93%	92.6%	93.9%			↑		<90%	90%<	95%	82.7%	81.4%				
	7.9	Health of Looked After Children - up to date Dental Assessments	High	Percentage	94.4%	94%	92.8%			↓		<90%	90%<	95%	42.5%	58.8%				
	7.10	% of LAC with a PEP	High	Percentage	98.1%	95.9%	97.0%			↑		<90%	90%<	95%	65.7%	68.7%				
	7.11	% of LAC with up to date PEPs	High	Percentage	94.7%	92.3%	90.7%			↓		<90%	90%<	95%	72.9%	71.4%				
	7.12	% of eligible LAC with an up to date plan	High	Percentage	98.3%	98.1%	98.6%			↑		<93%	93%<	95%	67.0%	98.8%				
	7.13	% of completed LAC visits which were completed within timescale - National Minimum standard	High	Percentage	97%	97%	97%			→		<95%	95%<	98%		94.9%				
	7.14	% of completed LAC visits which were completed within timescale - Rotherham standard	High	Percentage	75%	76%	80.2%			↑		<85%	85%<	90%		64.0%				
CARE LEAVERS	8.1	Number of care leavers	Info	Count	197	204	198			↓				n/a		183				
	8.2	% of eligible LAC with an up to date pathway plan	High	Percentage	94.9%	93.1%	93.9%			↑		<93%	93%<	95%		69.8%				
	8.3	% of care leavers in suitable accommodation	High	Percentage	97.5%	96.6%	98.5%			↑		<95%	95%<	98%	96.3%	97.8%	74.2%	100.0%	77.8%	90.0%
	8.4	% of care leavers in employment, education or training	High	Percentage	64.5%	64.2%	63.1%			↓		<70%	70%<	72%	52.3%	71.0%	40.8%	65.0%	45.0%	55.8%
PLACEMENTS	9.1	% of long term LAC in placements which have been stable for at least 2 years	High	Percentage	75.2%	74.7%	74.5%			↓		<68%	68%<	70%	68.8%	110/153 71.9%	67.6%	79.0%	67.0%	71.1%
	9.2	% of LAC who have had 3 or more placements - rolling 12 months	Low	Percentage	11.1%	11.3%	11.2%			↑		>12%	12%>	10%	11.2%	49/409 12.0%	9.6%	7.0%	11.0%	9.0%
ADOPTIONS	10.1	% of adoptions completed within 12 months of SHOBPA	High	Percentage	100%	100%	100%	81.3%	Financial Year	→	YTD	<83%	83%<	85%	55.6%	84.6%				
	10.2	Average number of days between a child becoming Looked After and having a adoption placement (A1) (Rolling 12 months)	Low	Rolling year - ave count	337.7	332.1	322.6	322.6	Rolling Year	↑	YTD	>511	511>	487	661	417.5	507.3	328.0	525.0	468.0
	10.3	Average number of days between a placement order and being matched with an adoptive family (A2) (Rolling 12 months)	Low	Rolling year - ave count	133.2	131.3	128.6	128.6	Rolling Year	↑	YTD	>127	127>	121	315	177.3	217.1	45.0	217.0	163.0

## PLANS - IN DATE

<b>DEFINITION</b>	A child's plan is to be developed for an individual child if they have a "wellbeing need" that requires a targeted intervention. Each type of plan has a completion target. When a Looked After Child reaches 16 years and 3 months they become eligible for a 'Pathway Plan' - this plan focuses on preparing a young person for adulthood and their future (For example; future accommodation, post 16 Education/Training and Employment)
-------------------	--

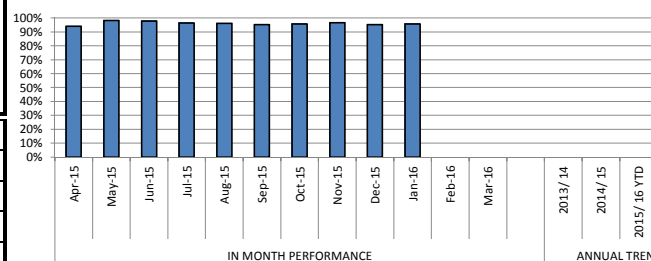
<b>PERFORMANCE ANALYSIS</b>	<p>For all plan types the exceptions are reviewed at the weekly performance meetings so that the reasons for an absence of an up to date plan is clearly understood by senior managers. Performance in relation to plans remains high and has further improved for CIN.</p> <p>Absence of an up to date LAC plan in almost all cases has been due to the presence of an alternative plan - for example the child has had a pathway plan put in place as they have reached age 16 years and 3 months or because the correct process has not been followed on the IT system to link the document to the section where data is extracted. The next few months will concentrate on the quality of the plans, and the work which these plans should be driving. This may result in plans requiring further work before association on the system which may cause delay and impact on these performance measures.</p> <p>The remits of both the locality and looked after children teams are being adjusted in order to enable social workers to develop a more specialist approach to distinct areas of work. This and the move towards embedding the Strengthening Families model is expected to contribute to the improvement in the quality of plans that is required generally. Pathway plan structures are being reviewed to make them more young person friendly to encourage 'ownership' by young people of their own plan. These will be introduced with the implementation of the new IT system</p>
-----------------------------	---

		5.4	5.5	6.13	7.12	8.2
		CIN with a recorded plan (open at least 45 days)	CIN with an up-to-date plan (open at least 45 days)	CPP with an up to date plan	LAC with an up to date plan	Eligible LAC with an up to date pathway plan
<b>IN MONTH PERFORMANCE</b>	Apr-15	94.1%	78.3%	97.0%	94.1%	77.6%
	May-15	98.3%	76.5%	100.0%	94.3%	85.2%
	Jun-15	97.7%	83.5%	100.0%	95.5%	92.8%
	Jul-15	96.3%	93.6%	99.2%	98.8%	94.2%
	Aug-15	96.2%	93.8%	100.0%	98.1%	98.5%
	Sep-15	95.3%	91.4%	99.8%	98.8%	94.9%
	Oct-15	95.7%	93.5%	99.5%	98.8%	94.9%
	Nov-15	96.6%	95.0%	99.7%	98.3%	94.9%
	Dec-15	95.3%	91.7%	99.4%	98.1%	93.1%
	Jan-16	95.8%	93.3%	98.9%	98.6%	93.9%
	Feb-16					
	Mar-16					

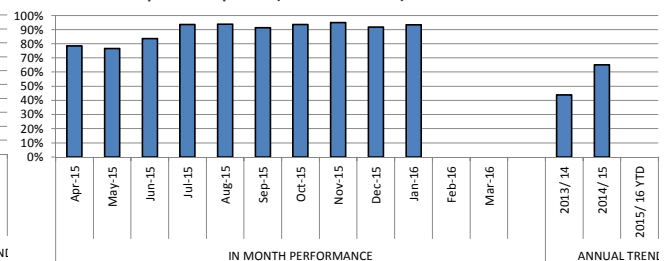
<b>ANNUAL TREND</b>	2013/ 14		43.8%		67.0%	
	2014/ 15		65.1%	97.6%	98.8%	69.8%
	2015/ 16 YTD					

<b>LATEST BENCHMARKING</b>	SN AVE					
	BEST SN					
	NAT AVE					
	NAT TOP Q TILE					

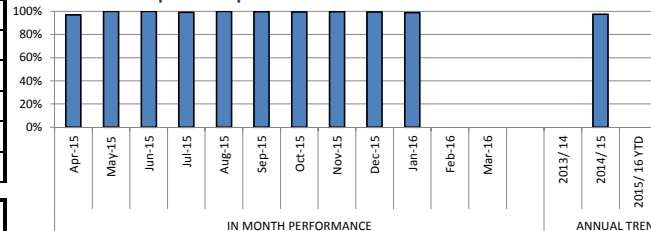
CIN with a recorded plan - open at least 45 days



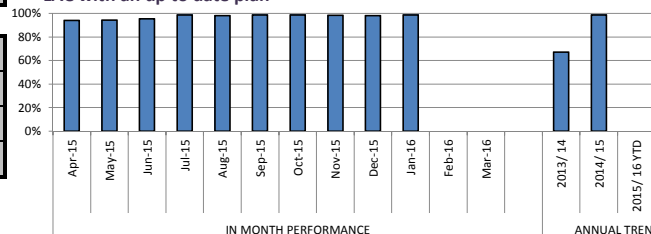
CIN with an up-to-date plan - open at least 45 days



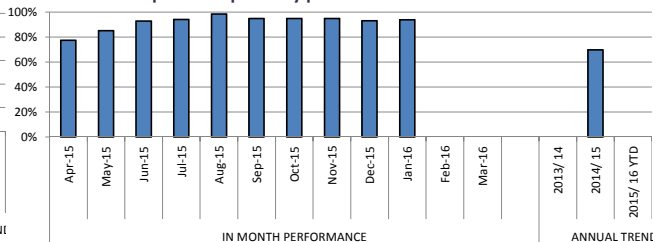
CPP with an up to date plan



LAC with an up to date plan



LAC with an up to date pathway plan



## LOOKED AFTER CHILDREN

### DEFINITION

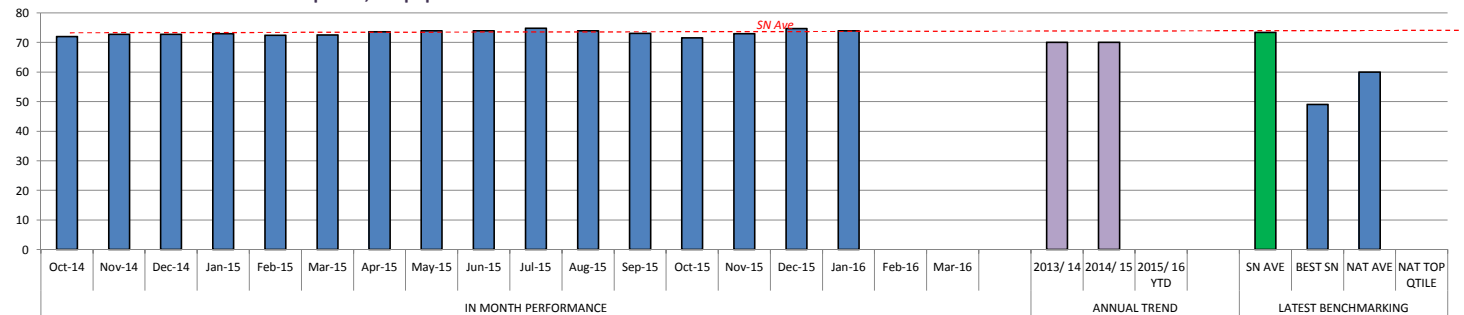
Children in care or 'looked after children' are children who have become the responsibility of the local authority. This can happen voluntarily by parents struggling to cope or through an intervention by children's services because a child is at risk of significant harm.

### PERFORMANCE ANALYSIS

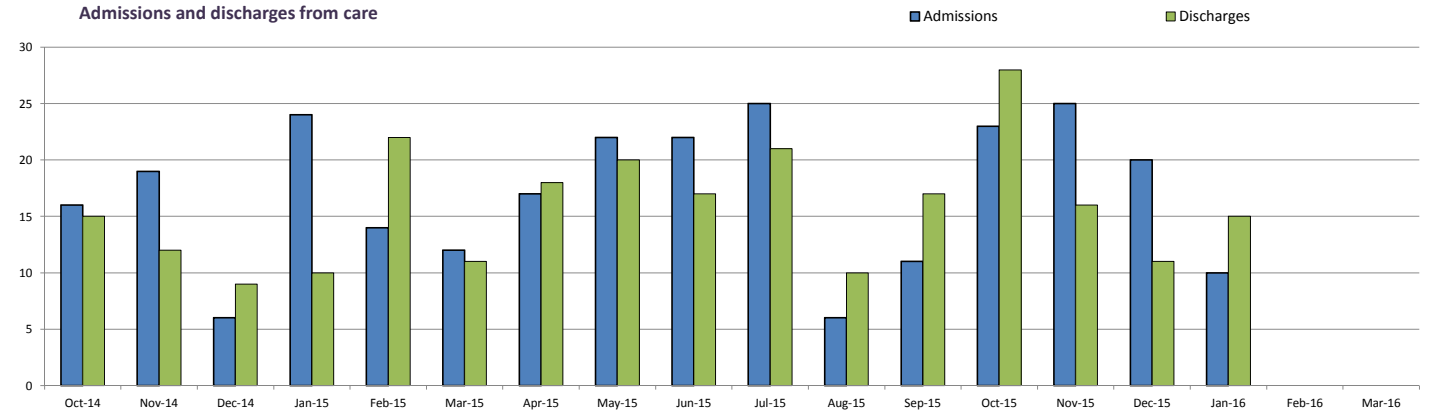
Although the numbers of LAC are in line with our statistical neighbours they are higher than the national average and best performing LA's. 'Edge of care' arrangements need to be strengthened over time to prevent the need for children to come into care this is part of the departmental strategy. This is particularly the case in respect of adolescents entering the care system for the first time. Outcomes are rarely improved for young people coming into care in adolescence and work will commence over the next few months to develop a service specifically to work with this group.

		7.2	7.1	7.3	7.4
		Rate of children looked after per 10K pop	Number of LAC	Admissions of children looked after	No. of children who have ceased to be LAC
IN MONTH PERFORMANCE	Oct-14	72.0	404	16	15
	Nov-14	72.7	408	19	12
	Dec-14	72.7	408	6	9
	Jan-15	72.9	409	24	10
	Feb-15	72.4	406	14	22
	Mar-15	72.5	407	12	11
	Apr-15	73.6	415	17	18
	May-15	73.9	417	22	20
	Jun-15	73.9	417	22	17
	Jul-15	74.8	422	25	21
	Aug-15	73.9	417	6	10
	Sep-15	73.1	412	11	17
	Oct-15	71.5	403	23	28
	Nov-15	72.9	411	25	16
	Dec-15	74.6	421	20	11
	Jan-16	73.9	417	10	15
	Feb-16				
	Mar-16				
ANNUAL TREND	2013/ 14	70.0		147	136
	2014/ 15	70.0		175	160
	2015/ 16 YTD			172	166
LATEST BENCHMARKING	SN AVE	73.4			
	BEST SN	49.0			
	NAT AVE	60.0			
	NAT TOP QTILE	-			

Rate of children looked after per 10,000 pop . 0-17



Admissions and discharges from care



## LOOKED AFTER CHILDREN - PLACEMENTS

### DEFINITION

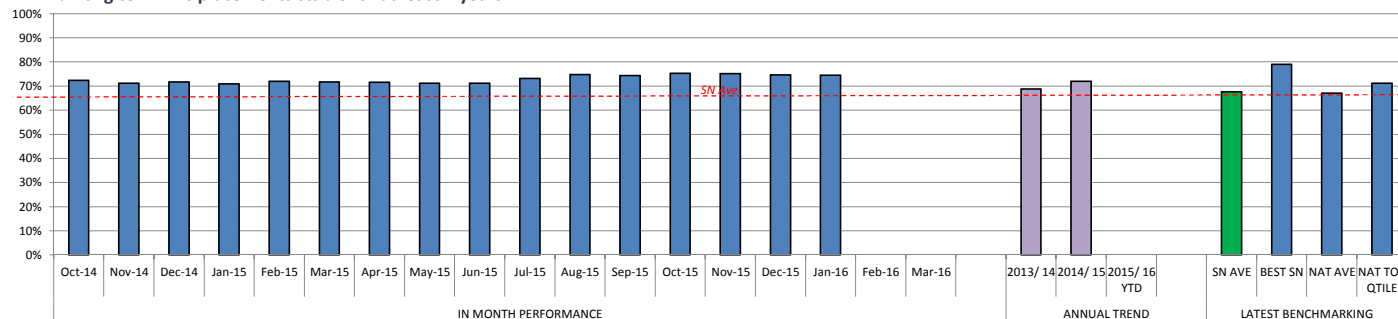
A LAC placement is where a child has become the responsibility of the local authority (LAC) and is placed with foster carers, in residential homes or with parents or other relatives.

### PERFORMANCE ANALYSIS

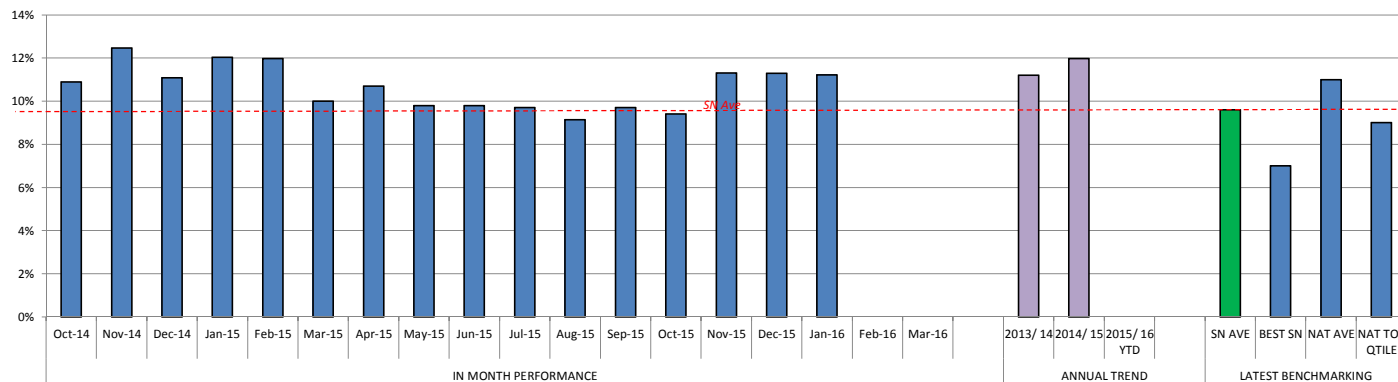
As reported previously performance in relation to long term LAC stability is very strong however it will be examined closely as part of our strategy to reduce the number of children in out of authority placements. We need to ensure that stability does not mask case drift and result in children remaining looked after longer than necessary or remaining in placements that are not meeting their long term needs. The performance in relation to children who have had 3 or more placement moves in a year is of some concern in that 47 children is just too many. The Deputy Director and newly appointed LAC managers will be looking at this group of children over the next period in order to better understand the issues. Our sufficiency strategy identifies that we have too many children placed in residential care, this balance has started to change for our internal provision but remains an issue in relation to the number of children placed in out of authority residential care and we will need to shift that balance to have more children placed in a family setting. This work is now underway and a more robust approach is firmly in place.

		9.1		9.2	
		No. of long term LAC placements stable for at least 2 years	% long term LAC placements stable for at least 2 years	No. of LAC who have had 3 or more placements - rolling 12 months	% LAC who have had 3 or more placements - rolling 12 months
IN MONTH PERFORMANCE	Oct-14	115 of 159	72.3%	44 of 404	10.9%
	Nov-14	111 of 156	71.2%	50 of 401	12.5%
	Dec-14	109 of 152	71.7%	46 of 415	11.1%
	Jan-15	105 of 148	71.0%	49 of 407	12.0%
	Feb-15	110 of 153	71.9%	49 of 409	12.0%
	Mar-15	109 of 152	71.7%	41 of 409	10.0%
	Apr-15	106 of 148	71.6%	44 of 412	10.7%
	May-15	108 of 152	71.1%	41 of 417	9.8%
	Jun-15	108 of 152	71.1%	41 of 417	9.8%
	Jul-15	109 of 149	73.2%	41 of 421	9.7%
	Aug-15	110 of 147	74.8%	39 of 417	9.1%
	Sep-15	110 of 148	74.3%	40 of 412	9.7%
	Oct-15	110 of 146	75.3%	38 of 406	9.4%
	Nov-15	109 of 145	75.2%	48 of 418	11.3%
	Dec-15	109 of 146	74.7%	48 of 425	11.3%
	Jan-16	108 of 145	74.5%	47 of 419	11.2%
	Feb-16				
	Mar-16				
ANNUAL TREND	2013/ 14	108 of 157	68.8%	44 of 393	11.2%
	2014/ 15	110 of 153	71.9%	49 of 409	12.0%
	2015/ 16 YTD				
LATEST BENCHMARKING	SN AVE		67.6%		9.6%
	BEST SN		79.0%		7.0%
	NAT AVE		67.0%		11.0%
	NAT TOP Q TILE		71.1%		9.0%

% long term LAC placements stable for at least 2 years



% LAC who have had 3 or more placements - rolling 12 months



## LOOKED AFTER CHILDREN - REVIEWS & VISITS

### DEFINITION

The purpose of LAC review meeting is to consider the plan for the welfare of the looked after child and achieve Permanence for them within a timescale that meets their needs. The review is chaired by an Independent Reviewing Officer (IRO)

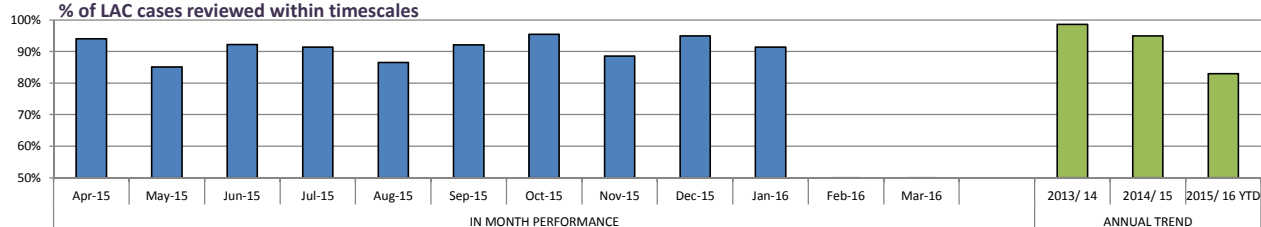
The LA is also responsible for appointing a representative to visit the child wherever he or she is living to ensure that his/her welfare continues to be safeguarded and promoted. The minimum national timescales for visits is within one week of placement, then 6 weekly until the child has been in placement for a year and the 12 weekly thereafter. Rotherham have set a higher standard of within first week then 4 weekly thereafter until the child has been permanently matched to the placement.

### PERFORMANCE ANALYSIS

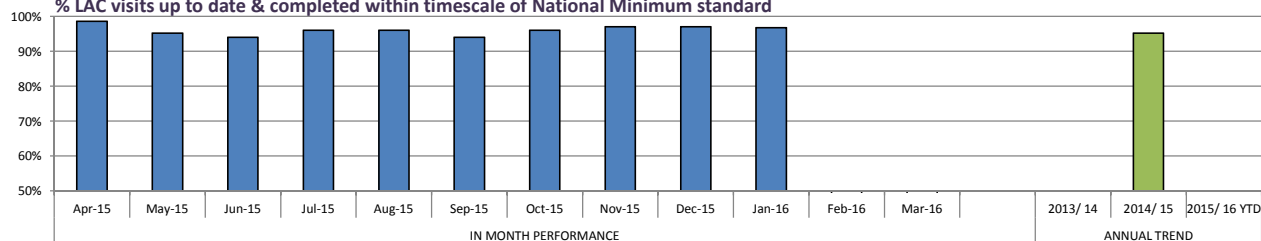
LAC Visits are monitored at the weekly performance meeting. Performance in relation to visits within the National Minimum Standards remains well above 90% any visit exceeding statutory minimum timescales is examined on a child by child basis to ensure they have been subsequently visited and to ensure the reason for lateness is understood. In addition to statutory minimum standard Rotherham has set a local standard that exceeds the National one, performance in relation to local standard is still not good enough and will continue to be the focus of sustained management attention. The reviews that were out of timescale related to 7 children from 3 families. One was recorded as late as a result of a earlier data entry issue, one was postponed as a result of a crisis in the placement that required an immediate response and one was a result of the late submission of a care plan. The latter issue has been followed up with the manager concerned.

		7.6		7.13		7.14
		No. LAC cases reviewed within timescales		% of LAC visits up to date & completed within timescale of National Minimum standard		% LAC visits up to date & completed within timescale of Rotherham standard
IN MONTH PERFORMANCE	Apr-15	79	of 84	94.0%	98.6%	73%
	May-15	63	of 74	85.1%	95.2%	79%
	Jun-15	95	of 103	92.2%	94%	76%
	Jul-15	106	of 116	91.4%	96%	74%
	Aug-15	32	of 37	86.5%	96%	76%
	Sep-15	117	of 127	92.1%	94%	74%
	Oct-15	84	of 88	95.5%	96%	76%
	Nov-15	93	of 105	88.6%	97%	75%
	Dec-15	93	of 98	94.9%	97%	76%
	Jan-16	74	of 81	91.4%	97%	80.2%
	Feb-16					
	Mar-16					
ANNUAL TREND	2013/ 14			98.6%		
	2014/ 15	19	of 371	94.9%	95.2%	82.6%
	2015/ 16 YTD	321	of 387	82.9%		
LATEST BENCHMARKING	SN AVE					
	BEST SN					
	NAT AVE					
	NAT TOP QTILE					

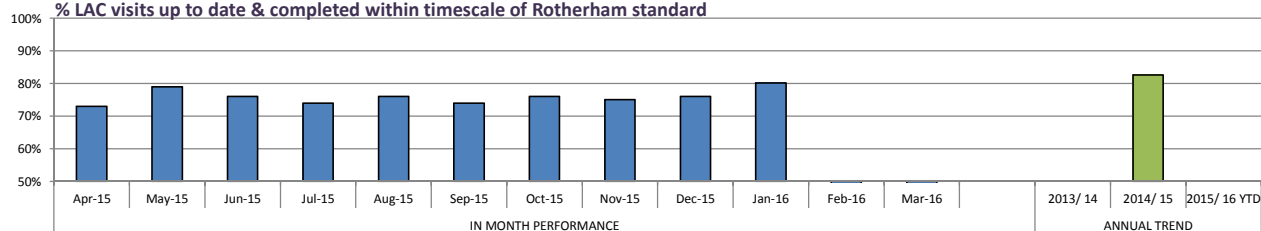
% of LAC cases reviewed within timescales



% LAC visits up to date & completed within timescale of National Minimum standard



% LAC visits up to date & completed within timescale of Rotherham standard



## LOOKED AFTER CHILDREN - HEALTH

### DEFINITION

Local authorities have a duty to safeguard and to promote the welfare of the children they look after, therefore the local authority should make arrangements to ensure that every child who is looked after has his/her health needs fully assessed and a health plan clearly set out.

### PERFORMANCE ANALYSIS

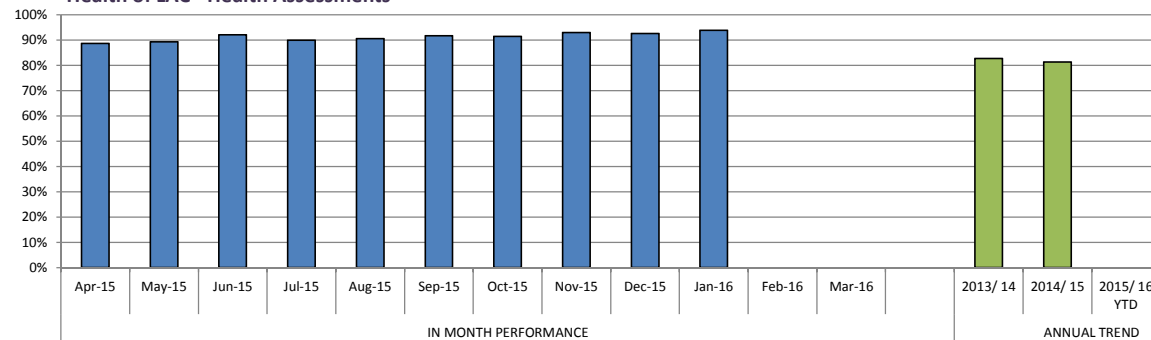
Performance in relation to health and dental assessments was poor and has been the focus of concerted joint effort and has shown previous improvement. Close monitoring means that any dips in performance are understood. Due to the process for health QA checks of assessments following completion there is a time lag between the assessment occurring and showing on the system as completed. Performance will continue to be very closely monitored.

		7.8	7.9
		Health of LAC - Health Assessments	Health of LAC - Dental Assessments
IN MONTH PERFORMANCE	Apr-15	88.7%	70.5%
	May-15	89.3%	64.7%
	Jun-15	92.1%	86.6%
	Jul-15	89.9%	94.1%
	Aug-15	90.6%	94.1%
	Sep-15	91.7%	96.2%
	Oct-15	91.5%	95.7%
	Nov-15	93%	94.4%
	Dec-15	92.6%	94.0%
	Jan-16	93.9%	92.8%
	Feb-16		
	Mar-16		

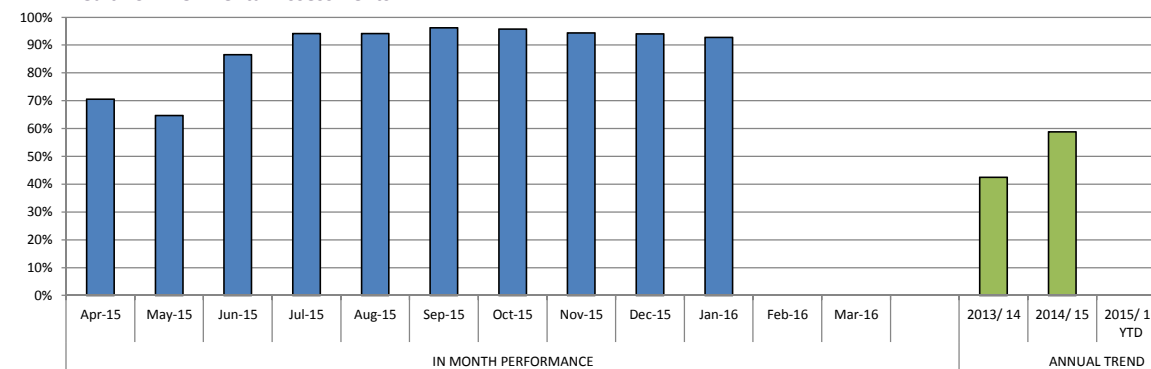
ANNUAL TREND	2013/ 14	82.7%	42.5%
	2014/ 15	81.4%	58.8%
	2015/ 16 YTD		

LATEST BENCHMARKING	SN AVE		
	BEST SN		
	NAT AVE		
	NAT TOP QTILE		

Health of LAC - Health Assessments



Health of LAC - Dental Assessments



## LOOKED AFTER CHILDREN - PERSONAL EDUCATION PLANS

### DEFINITION

A personal education plan (PEP) is a school based meeting to plan for the education of a child in care. The government have made PEPs a statutory requirement for children in care to help track and promote their achievements.

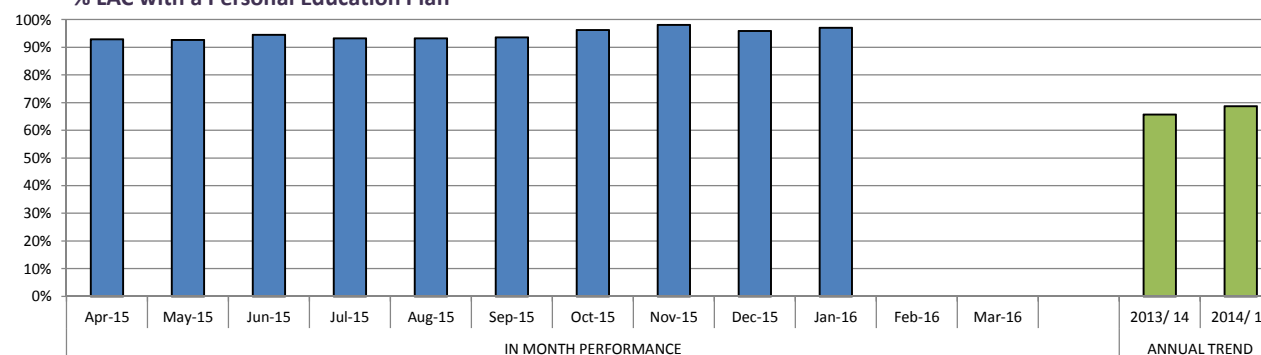
### PERFORMANCE ANALYSIS

Previously, education of Looked After Children was supported by The Get Real team. This team ceased to exist from the 1st April 2015 and this has been replaced by a new Virtual School.

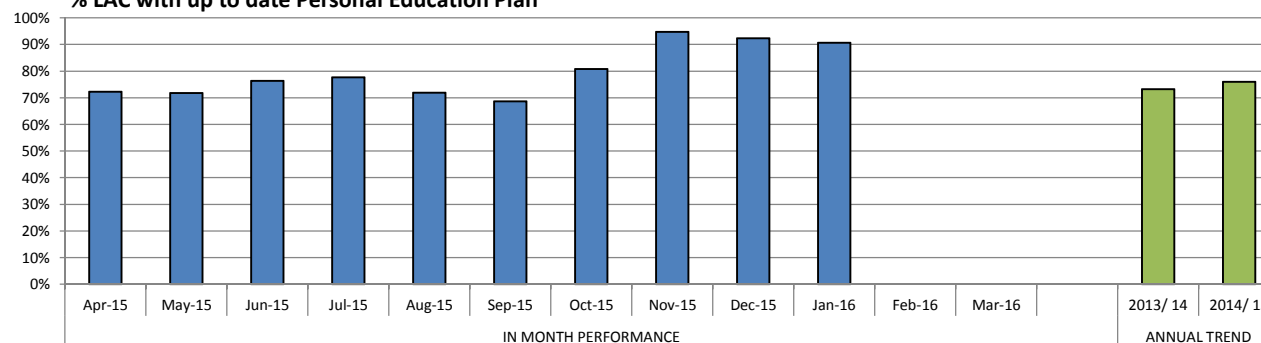
The completion of the PEP moved to an E-PEP system in September (start of Autumn term) It was anticipated that performance data would take some time to show improvement and performance was of significant concern. Urgent activity was undertaken to examine the issues and as a result a revised system for signing off of PEPs was put in place by the Assistant Director Education and Skills this resulted in a jump in performance. We will endeavour to maintain this with a renewed focus on the quality of plans ensuring that they address individual needs and termly goals.

		7.10	7.11
		% LAC with a Personal Education Plan	% LAC with up to date Personal Education Plan
IN MONTH PERFORMANCE	Apr-15	92.9%	72.3%
	May-15	92.6%	71.8%
	Jun-15	94.5%	76.3%
	Jul-15	93.2%	77.7%
	Aug-15	93.2%	71.9%
	Sep-15	93.6%	68.6%
	Oct-15	96.2%	80.8%
	Nov-15	98.1%	94.7%
	Dec-15	95.9%	92.3%
	Jan-16	97.0%	90.7%
	Feb-16		
	Mar-16		
ANNUAL TREND	2013/ 14	65.7%	73.3%
	2014/ 15	68.7%	76.0%
	2015/ 16 YTD		
LATEST BENCHMARKING	SN AVE		
	BEST SN		
	NAT AVE		
	NAT TOP Q TILE		

% LAC with a Personal Education Plan



% LAC with up to date Personal Education Plan





## CARE LEAVERS

### DEFINITION

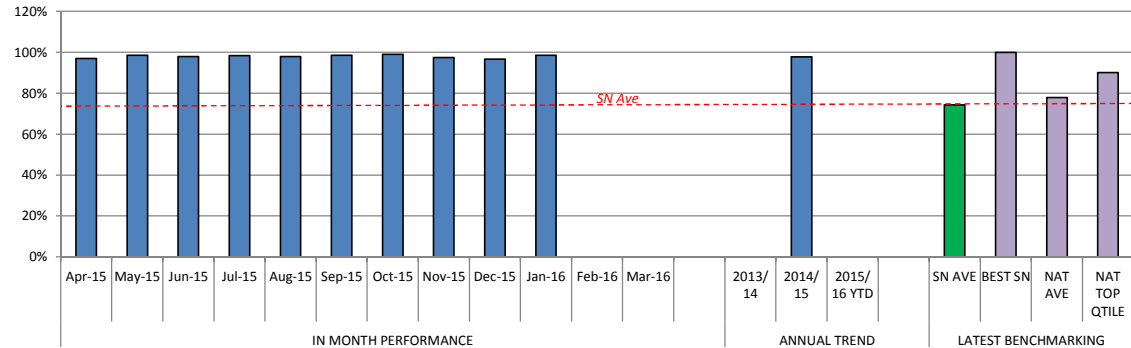
A care leaver is defined as a person aged 25 or under, who has been looked after away from home by a local authority for at least 13 weeks since the age of 14; and who was looked after away from home by the local authority at school-leaving age or after that date.

### PERFORMANCE ANALYSIS

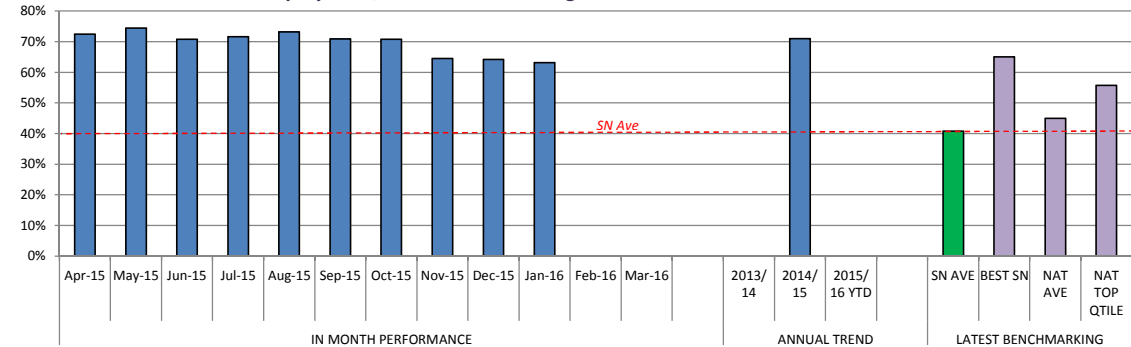
There will be a renewed focus on ensuring that our care leavers really are in suitable accommodation meaning that we are confident that are young people are living in situations that we would be content for any young people to living in. The indicator below only tells us that we have few if any young people living in bed and breakfast accommodation or are in prison. We will also be looking in the coming months about the actions that are required to drive up the numbers of young people who are in further education, training or employment. Both these areas will require the attention of the Corporate Parenting Panel on a regular basis.

		8.1	8.3	8.4
		Number of care leavers	% of care leavers in suitable accommodation	% of care leavers in employment, education or training
IN MONTH PERFORMANCE	Apr-15	189	97.0%	72.5%
	May-15	200	98.5%	74.5%
	Jun-15	198	98.0%	70.8%
	Jul-15	190	98.4%	71.6%
	Aug-15	198	98.0%	73.2%
	Sep-15	199	98.5%	70.9%
	Oct-15	195	99.0%	70.8%
	Nov-15	197	97.5%	64.5%
	Dec-15	204	96.6%	64.2%
	Jan-16	198	98.5%	63.1%
	Feb-16			
	Mar-16			
ANNUAL TREND	2013/ 14			
	2014/ 15	183	97.8%	71.0%
	2015/ 16 YTD			
LATEST BENCHMARKING	SN AVE		74.2%	40.8%
	BEST SN		100.0%	65.0%
	NAT AVE		77.8%	45.0%
	NAT TOP QTILE		90.0%	55.8%

% of care leavers in suitable accommodation



% of care leavers in employment, education or training



## ADOPTIONS

### DEFINITION

Following a child becoming a LAC, it may be deemed suitable for a child to become adopted which is a legal process of becoming a non-biological parent.

The date it is agreed that it is in the best interests of the child that they should be placed for adoption is known as their 'SHOBPA'. Following this a family finding process is undertaken to find a suitable match for the child based on the child's needs, they will then be matched with an adopter(s) followed by placement with their adopter(s). This adoption placement is monitored for a minimum of 10 weeks and assessed as stable and secure before the final adoption order is granted by court decision and the adoption order is made.

Targets for measures A1 and A2 are set centrally by government office.

### PERFORMANCE ANALYSIS

Performance each month can vary significantly given the size of the cohort which is always very small.

Given these factors it is most useful to look at a rolling 12 months than a month snapshot and overall performance in this area over the last 3 years has shown an improving trend. The available number of in house adopters is lower than we need and this is likely to result in the need to purchase placements from other adoption providers. The adoption recruitment campaign is being redesigned and shared arrangements with other South Yorkshire authorities are being progressed.

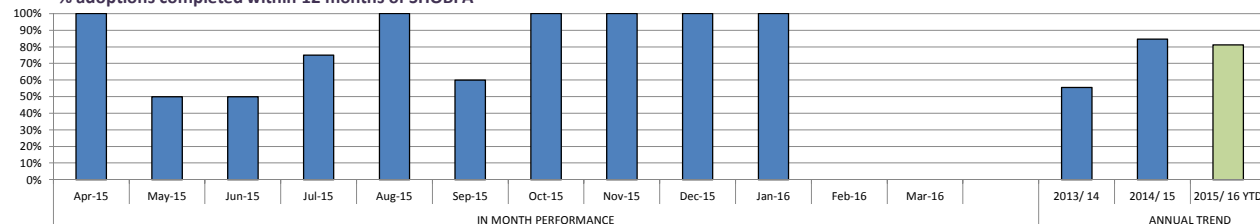
				10.1	10.2	10.3
		Number of adoptions	Number of adoptions completed within 12 months of SHOBPA	% adoptions completed within 12 months of SHOBPA	Av. No. days between a child becoming LAC & having a adoption placement (A1) (rolling yr.)	Av. No. days between placement order & being matched with adoptive family (A2) (rolling yr.)
IN MONTH PERFORMANCE	Apr-15	4	4	100%	389.9	142.2
	May-15	2	1	50%	396.3	144.7
	Jun-15	2	1	50%	399.6	148.9
	Jul-15	8	6	75%	379.7	139.6
	Aug-15	1	1	100%	380.1	140.7
	Sep-15	5	3	60%	378.1	149.8
	Oct-15	3	3	100%	359.8	143.6
	Nov-15	2	2	100%	337.7	133.2
	Dec-15	1	1	100%	332.1	131.3
	Jan-16	2	2	100%	322.6	128.6
	Feb-16					
	Mar-16					

ANNUAL TREND	2013/ 14			55.6%	661.0	315.0
	2014/ 15			84.6%	417.5	177.3
	2015/ 16 YTD	26	32	81.3%	322.6	128.6

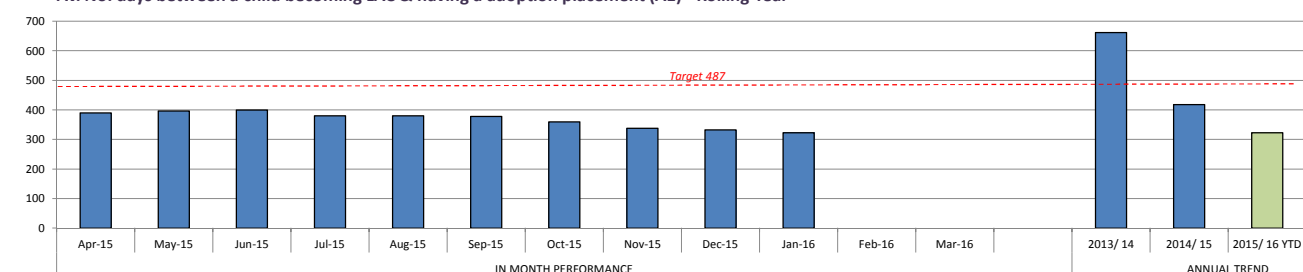
LATEST BENCHMARKING	SN AVE					
	BEST SN					
	NAT AVE					
	NAT TOP QTILE					

\*Annual Trend relates to current reporting year April to Mar not rolling year

% adoptions completed within 12 months of SHOBPA



Av. No. days between a child becoming LAC & having a adoption placement (A1) - Rolling Year



Av. No. days between placement order & being matched with adoptive family (A2) - Rolling Year

